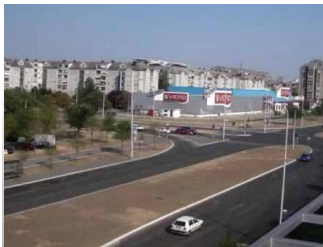


## vCAM VIPC-3M1



### Multi-purpose Indoor/Outdoor Camera VIPC-3M1 (Vlatacom IP Camera)

#### Product Description

vCAM is a Vlatacom product series of IP cameras for general use. The VIPC-3M1 model is a compact camera designed for both indoor and outdoor applications. Its primary function is to record scene images, convert them to video content or an image sequence, and then either send them via the selected telecommunications network and/or keep them stored in local memory (SD card). The camera is also capable of recording and processing audio signals, generating alarm signals, and sending messages when an event triggers certain camera pre-sets. VIPC-3M1 also features high image quality, three different types of video compression, motion detection, day/night mode, operator-controlled bandwidth, and many other advanced features. A device with these properties can be easily integrated into various sophisticated technical systems.

#### Key Features

- 3.0 megapixel CMOS sensor
- 30 fps in Full HD resolution
- 3 video streaming compressions (H.264, MPEG-4, MJPEG)
- Parallel encoding of up to 3 streams simultaneously
- Access for up to 10 simultaneous users
- Video management (RTSP stream, NFS, or local SD card)
- Day/Night mode, auto-switched
- Support for various internet protocols
- Time synchronisation (NTP)
- Remotely configured camera
- Remotely controlled zoom and focus
- Motion detection
- Audio input/output and alarm input/output
- Wide operational temperature range
- 12 V (DC), 24 V (AC), PoE, rechargeable Li-ion battery (min. autonomy of 2h)

## Market

As the VIPC-3M1 camera is designed for general purposes, it can be implemented in various public institutions, law enforcement agencies, banks, and industrial or power plants. This model's principal use is for the transmission of video or moving images. Its key advantages are the support of motorised and standard C/CS mount lenses, autofocus optics, a built-in rechargeable battery, video management, and compatibility with leading software solutions for video management.

A particularly important feature of the camera is its ability to work in a wide temperature range and at high humidity levels, which further expands its realm of application. There are three camera models for different markets, depending on the local climate conditions.

The VIPC-3M1 camera operates reliably even in situations of power loss or IT network failure, and it is strongly protected against vandalism.

Outdoor installation of the VIPC-3M1 camera requires placing it in a specialised housing along with applying certain environmental protection standards. Various protection levels may be supported according to client needs and requirements, including IP54, IP55, IP65, IP66, and others.

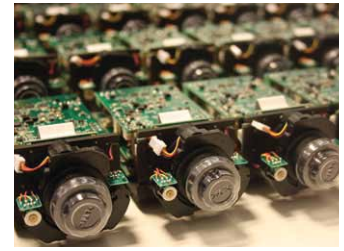
Indoor installation usually requires placing the camera on the ceiling or on a wall-mounted dome. The Panomorph optics feature is supported in this installation scenario.

## Applications

This camera is intended to be used in "Safe City", "e-Government", and "Border Control" projects.

The primary implementations are related to the following potential applications:

- Video surveillance - Cameras can be set in either centralised or decentralised environments. In case of the former, the entire video stream is stored only at the video control centre, while in the latter case, videos are stored locally using an SD card. There is also a hybrid scenario: In case of failure or in special situations, videos are stored on local SD cards, and when the system resumes normal operation, saved content is sent to the video control centre. In these situations remote controlled zoom and focus are important, and thus provided by the VIPC-3M1.
- Traffic control - In this scenario the camera is used for video surveillance and vehicle counting, in addition to using applicable software in order to register traffic violations. If the camera is used for licence plate recognition, it must be synchronised with the illuminator in order to enhance image quality. In this application the camera produces a sequence of pictures to achieve reliable licence plate recognition.
- Machine vision - For any solution that relies on a camera based on IP protocol. By using appropriate applications and algorithms, the camera can recognize shapes, characters, faces, etc.



## Main advantages

- Local intelligence and content analysis
- Local video memory
- Fully automated remote control of zoom and focus
- Simple installation
- Operational in case of power and network failures
- Wide temperature range
- Support for motorized and standard C/CS mount lenses



### VIPC-3M1 in brief

- 3.0 megapixel CMOS sensor
- 30 fps in Full HD resolution
- 3 video streaming compressions (H.264, MPEG-4, MJPEG)
- Parallel encoding of up to 3 streams simultaneously

<b>Camera:</b>	<b>Image sensor:</b>	1/2.8" 3Mpix CMOS sensor
	<b>Lens:</b>	-C/CS mount, Auto iris -Board mount Megapixel Lens, Remotely controlled zoom and focus, Auto iris, IR cut filter
	<b>Minimum illumination:</b>	Color: 0.2 Lux at F1.2; B/W: 0.01 Lux at F1.2
	<b>S/N ratio:</b>	50dB min
	<b>Day &amp; Night:</b>	Auto / Day / Night
<b>Video:</b>	<b>Video Compression:</b>	H.264 / MPEG4 / MJPEG
	<b>Video streaming:</b>	-Single (H.264, MPEG4, MJPEG) -Dual (H.264/MJPEG, H.264/H.264, H.264/MPEG4, MPEG4/MJPEG, MPEG4/MPEG4) -Triple (Dual H.264 / Single MJPEG, Dual MPEG4 / Single MJPEG)
	<b>Resolutions:</b>	2048x1536 down to 320x192
	<b>Frame Rate:</b>	30 fps at 1920x1080, 20 fps at 2048x1536
	<b>Data Rate:</b>	Up to 6Mbps
	<b>Analog Video:</b>	PAL-NTSC
	<b>Image settings:</b>	Adjustable image size, quality, and bit rate, Day / Night mode, Flip & Mirror, AGC, AWB, DNR, AES, Time stamp and text caption overlay, Privacy masks, Exposure Mode Support for PSIA and ONVIF
<b>Audio:</b>	<b>Redundancy:</b>	Parallel video (streaming/recording to SD card)
	<b>Audio streaming:</b>	Two-way (in, out)
	<b>Compression:</b>	AAC-LC 8khz/16khz, G.711 8khz/16khz
	<b>Audio bit rate:</b>	64kbps
<b>Network:</b>	<b>Security:</b>	Password protection, IP address filtering, HTTPS, User access log
	<b>Protocols:</b>	HTTPS, HTTP, TCP, UDP, RTP/RTCP/RTSP, DHCP, NTP, FTP, SMTP, UPnP, Ipv4
	<b>Users:</b>	Access by 10 simultaneous users
	<b>Profiles:</b>	3 selectable (Admin, Operator, Viewer)
	<b>Firmware update:</b>	SD card / HTTP
<b>Alarm:</b>	<b>Recording:</b>	SD card, FTP
	<b>Trigger:</b>	Motion Detection, Schedule, Alarm input, Ethernet loss
<b>General:</b>	<b>Notification:</b>	SD card recording, SMTP, FTP, Audio output
	<b>Cable inlet:</b>	1 inlet for network 1 inlet for power, audio and alarm signals
	<b>Internal storage:</b>	SD / SDHC card slot
	<b>Power:</b>	12VDC, 24VAC, 802.3af compliant Power over Ethernet (IEEE 802.3af. Class 0), battery
<b>Operating conditions:</b>	<b>Temperature:</b>	Model 1: 0 to 50°C (32 to 122 F) Model 2: -20 to 50°C (-2 to 122 F) Model 3: -40 to 55°C (-38 to 122 F)
<b>Dimension/Weight:</b>	<b>Dimensions of case:</b>	450x140x160(LxWxH) mm
	<b>Weight:</b>	Indoor/Outdoor camera: 3.5kg; Outdoor camera(built-in battery,heater): 4kg; Outdoor camera (battery,heater,cleaner) 6kg
<b>Approvals:</b>		CE, RoHS (EN55022:2010, EN55024:2010, EN 61000-3-3:2008, EN61000-3-2:2006+A1:2009+A2:2009, EN60950-1:2006+A1:2010+A11:2009+A12:2011)

# VLATACOM - A reliable partner

Vlatacom vCAM VIPC-3M1 is a state-of-the-art digital camera featuring versatile interfaces and protocols. Its design, adaptability, and features make it a very suitable component of every video surveillance solution.

## Vlatacom's experience

Since its establishment in 1997, Vlatacom has delivered numerous solutions to a multitude of clients. Vlatacom's policy is to continuously improve the professional skills and knowledge of its employees. This provides Vlatacom with the ability to successfully and professionally integrate complex solutions in the areas of information and communication technologies, biometrics, security, and telecommunications.

## Customised solutions

Vlatacom provides the essential strategies, technology, processes, and personnel to optimise solutions in accordance with your specific requirements and demands. Simple integration of our solutions into existing systems gives you the opportunity to always keep the entire solution under complete control. Provided solutions are customisable to features of local culture (language, alphabet).



Research and Development Center  
**VLATACOM**

Address:  
Vlatacom d.o.o.  
Milutina Milankovića 5  
11070 Belgrade, Serbia

tel: +381 11 377 11 00  
fax: +381 11 377 11 99

[www.vlatacom.com](http://www.vlatacom.com)